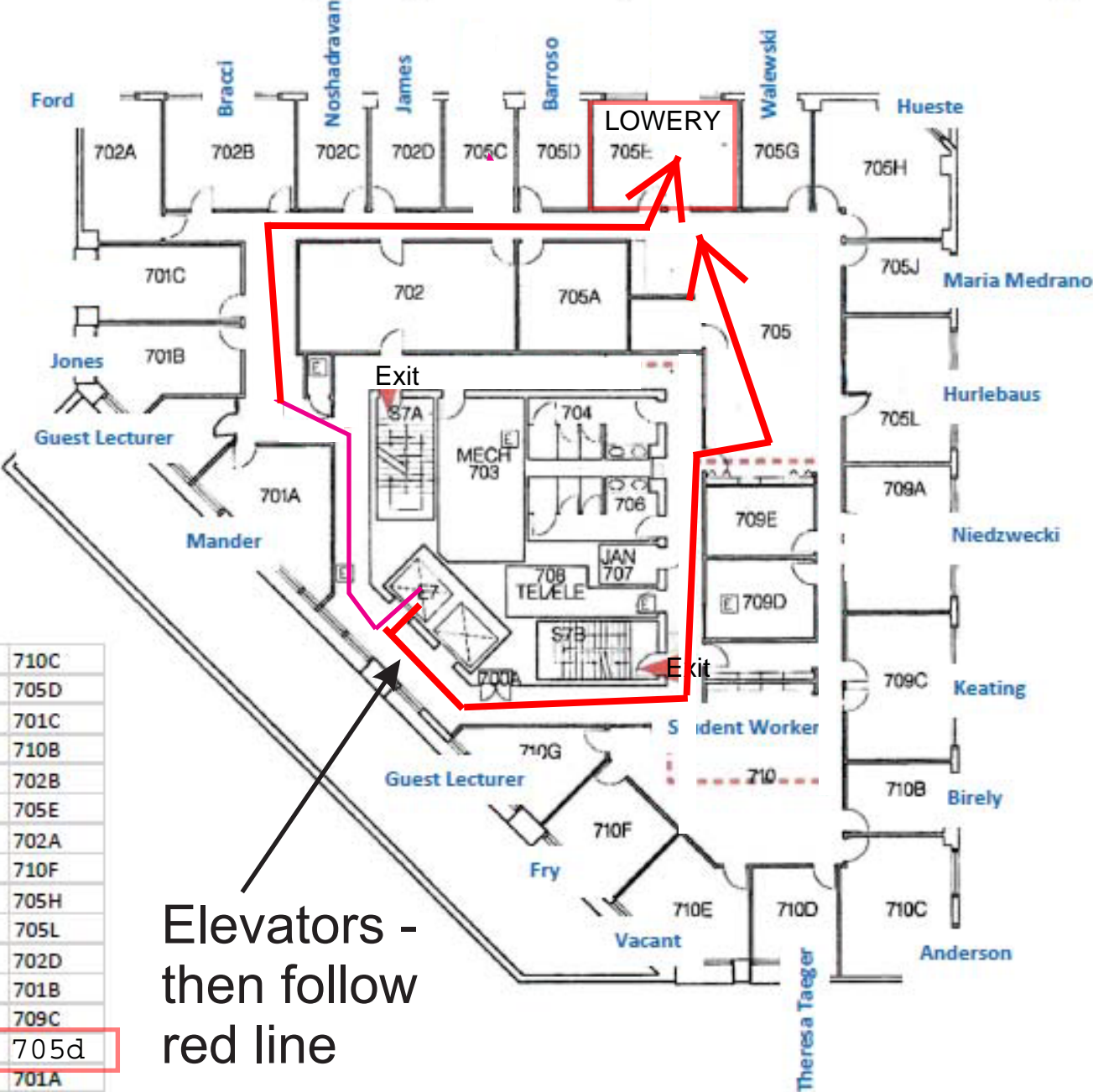


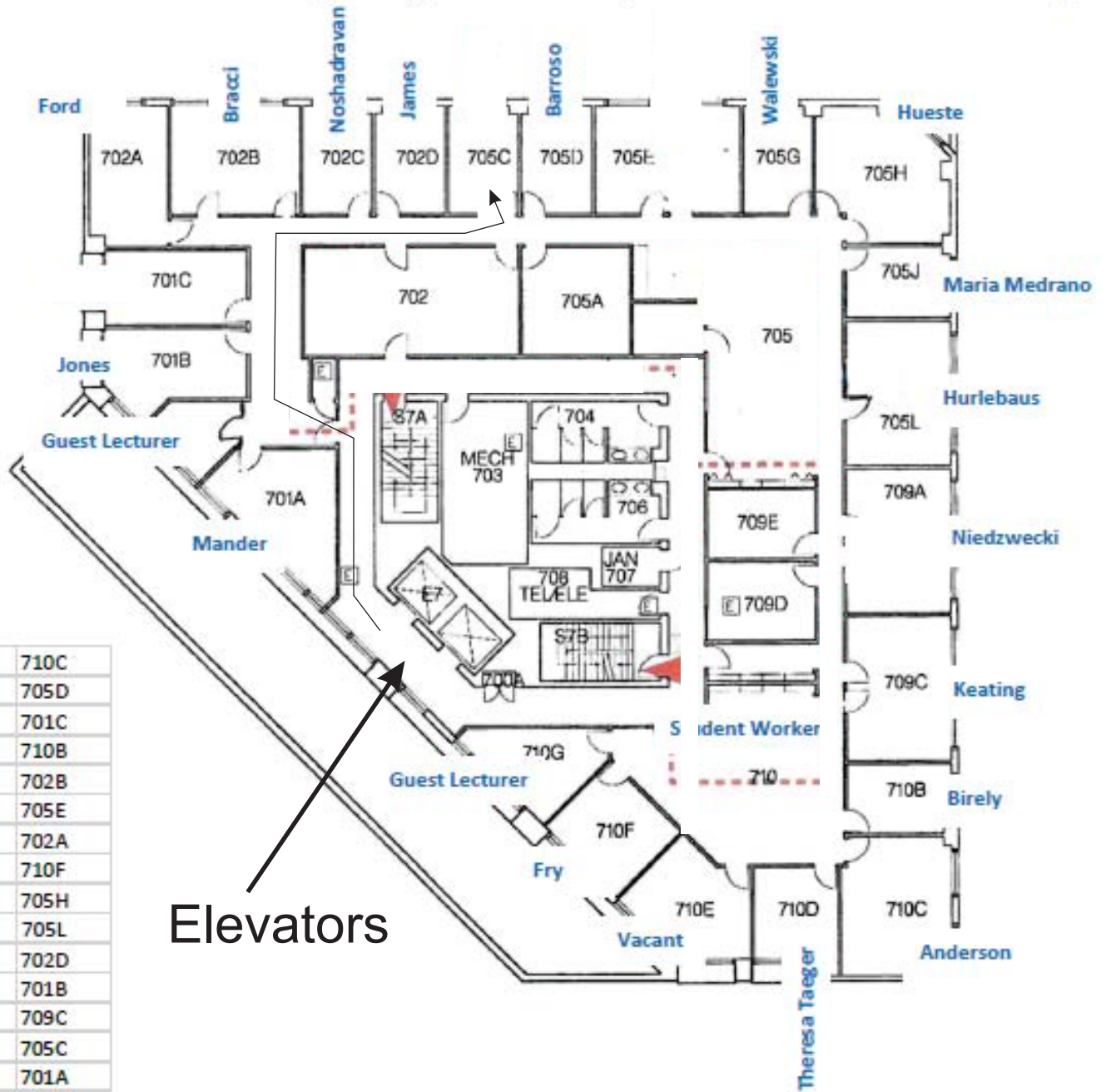
Construction, Geotechnical and Structural Engineering Division - Faculty Office location and Room numbers (7th Floor)



| | |
|-------------------|------|
| Anderson, Stuart | 710C |
| Barroso, Luciana | 705D |
| Beason, Lynn | 701C |
| Birely, Anna | 710B |
| Bracci, Joseph | 702B |
| Damnjanovic, Ivan | 705E |
| Ford, David | 702A |
| Fry, Gary | 710F |
| Hueste, Mary Beth | 705H |
| Hurlebaus, Stefan | 705L |
| James, Ray | 702D |
| Jones, Harry | 701B |
| Keating, Peter | 709C |
| Lowery, Lee | 705d |
| Mander, John | 701A |
| Niedzwecki, John | 709A |
| Waleski, John | 705G |

Elevators - then follow red line

Construction, Geotechnical and Structural Engineering Division - Faculty Office location and Room numbers (7th Floor)



Elevators

| | |
|-------------------|------|
| Anderson, Stuart | 710C |
| Barroso, Luciana | 705D |
| Beason, Lynn | 701C |
| Birely, Anna | 710B |
| Bracci, Joseph | 702B |
| Damnjanovic, Ivan | 705E |
| Ford, David | 702A |
| Fry, Gary | 710F |
| Hueste, Mary Beth | 705H |
| Hurlebaus, Stefan | 705L |
| James, Ray | 702D |
| Jones, Harry | 701B |
| Keating, Peter | 709C |
| Lowery, Lee | 705C |
| Mander, John | 701A |
| Niedzwecki, John | 709A |
| Waleski, John | 705G |